

2022 ICE CREAM SOCIAL

# SCHOLARSHIP AWARDS



Truman Heartland  
**COMMUNITY  
FOUNDATION**

Private Giving—Public Good



# Message from the President and the Scholarship Chair

---



For 40 years, Truman Heartland Community Foundation has been helping donors offer financial support to local students. A scholarship fund is an easy and effective way to give back to your Eastern Jackson County community, honor the memory of a loved one, or engage businesses in corporate giving. Our donors are extraordinarily generous and continue to make childhood dreams of higher education a reality for students throughout the region.

Before you begin to flip through these pages to see this year's scholarship recipients, let's take a moment to reflect on the growth of the THCF scholarship program. When our Director of Scholarships started at the Foundation back in 2015, fundholders provided just over \$199,000 in educational funding to 162 deserving students. Since then, there has been an incredible 228 percent increase in scholarship funding. More than \$656,000 was awarded this year to 269 students.

Truman Heartland is now home to 175 different scholarship funds, from multi-year renewable awards in a university setting to one-time professional certifications through a trade school. THCF donors offer students a wide variety of opportunities. But just as donor generosity continues to grow, so does student need. In 2021 nearly 800 scholarship applications were received by THCF. This year, nearly 1,400 applications were received, an increase of 78 percent. Until the cost of higher education comes down to a reasonable and affordable level, the number of students needing assistance will continue to grow.

THCF scholarship donors support students of all ages to fulfill their dreams, so they will not have to depend wholly on loans to pay for their higher education. The generosity of donors like you do make dreams come true. Thank you for being with us today, after our two-year Covid-break, to celebrate your generosity and your student recipients' bright futures.

A handwritten signature in black ink that reads "Phil Hanson".

Phil Hanson, President and CEO

A handwritten signature in black ink that reads "Stan Salva".

Stan Salva, Scholarship Committee Chair

---

## SPONSORS

**Edward Jones**  
Craig Bolger



## 2022 SCHOLARSHIP COMMITTEE

**Stan Salva**  
*Chair*

**Dr. Tom Meyer**  
*Board Member*

**Linda Gerding**  
*Board Member*

**Dr. Jason Snodgrass**  
*Board Member*

### BLUE SPRINGS/GRAIN VALLEY ADVISORY BOARD

**Christine Johnson**   **Marty Napier**   **Jeff Smith**  
**Cindy Miller**   **Eddie Saffell**

### INDEPENDENCE/SUGAR CREEK ADVISORY BOARD

**Dr. Ryan Crider**   **Dr. John Ruddy**   **Beth Savidge**  
**Chuck Mikulich**   **John Ryan**   **Ginger Williams**

### LEE'S SUMMIT/LAKE WINNEBAGO ADVISORY BOARD

**Trisha Drape**   **Janice Phelan**  
**Todd Haynes**   **Amanda Robinson**

### RAYTOWN ADVISORY BOARD

**Dr. Robert Cordell**   **Brian DeMoss**   **Dr. Mike Watkins**  
**Damon Hodges**   **Linda Roberts**

## DONOR DIRECTED SCHOLARSHIP REVIEWERS

### BLUE SPRINGS/GRAIN VALLEY ADVISORY BOARD

**Travis Hunt**   **Kim Roam**

### INDEPENDENCE/SUGAR CREEK ADVISORY BOARD

**Don Claphan**   **Bridgette Shaffer**   **Terry Snapp**

### LEE'S SUMMIT/LAKE WINNEBAGO ADVISORY BOARD

**Claudia Meyer**

### RAYTOWN ADVISORY BOARD

**John Grant**   **Erin Luttrell**   **Matt Verlinden**

# \$656,187

AWARDED IN SCHOLARSHIPS IN 2022

## 389

Scholarships  
Awarded

## 269

Students Receiving  
Scholarships

## 1,396

Applications  
Received



## 136

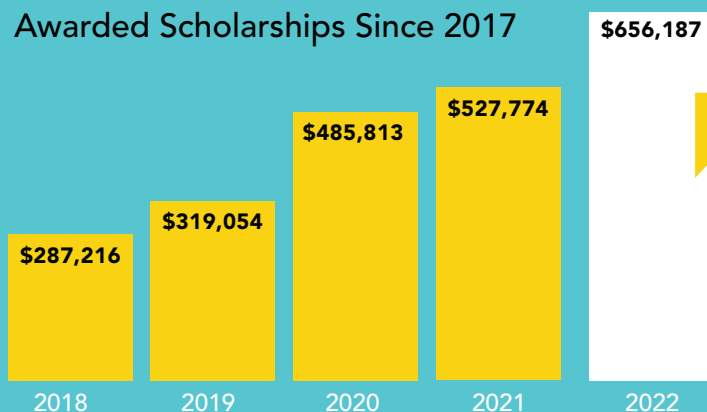
Scholarship Funds



## 365

Reviewers

## Awarded Scholarships Since 2017



Another record-breaking year for scholarships!



# \$5.82M+

AWARDED SINCE 1982

As of 6.2.2022

# Scholarships

---

Our donors created the scholarships listed below support students pursuing a variety of educational disciplines. Each scholarship established at Truman Heartland Community Foundation has eligibility criteria specifically designed to exemplify the donor's education values.

---

## ASSOCIATION FOR INDUSTRIAL DEVELOPMENT SCHOLARSHIP

Eligible applicants must be either graduating high school seniors from Eastern Jackson County or employees of businesses located in either of the Independence Industrial Parks pursuing their undergraduate education.

Evan Funk, \$500	Rebecca Stutzman, \$500
Alex Green, \$500	Alivia Tolbert, \$500
Precious Plaisime, \$500	Sadie Waller, \$500

## MARY K. AXTELL TRUST SCHOLARSHIP

Eligible applicants must be residents of Carroll or Ray Counties and graduating seniors or past graduates from public high schools serving residents of Carroll or Ray Counties pursuing undergraduate degrees at accredited junior colleges, colleges, universities, or technical certifications from accredited technical schools. Preference may be given to those pursuing agriculture-related degrees.

Ely Allen, \$1,000	Ethan Hoerr, \$5,000
Lilly Bachtel, \$5,000	Joshua Isaacson, \$1,000
Sydney Bartlett, \$5,000	Timothy Isaacson, \$5,000
Morgan Brockmeier, \$5,000	Shane Leakey, \$5,000
Katherine Brown, \$5,000	Chloe Lock, \$5,000
Mackenzie Brown, \$5,000	Avery Matthews, \$5,000
Madison Brown, \$5,000	Kinley McClure, \$1,000
Blake Buchanan, \$1,000	Emily Miller, \$5,000
Karter Burnside, \$1,000	Thessaly Myler, \$5,000
Ethan Cooper, \$5,000	Madelyn Newham, \$5,000
Haylee Deitch, \$5,000	Alisen Pierson, \$5,000
Kayla Dooley, \$5,000	Lauren Reimer, \$1,000
Olivia Dooley, \$5,000	Jodi Robinson, \$5,000
Carissa Dunn, \$5,000	Sally Schmidt, \$5,000
Henry William Eiserer, \$1,000	Jaeden Sears, \$5,000
Morgan Finley, \$1,000	Jerren Sears, \$5,000
Konner Gilson, \$5,000	Maggie Utlaut, \$5,000
Bruce Grider, \$1,000	Burton Watson, \$5,000
Drake Heussner, \$5,000	Chandler Wheeler, \$5,000
Madelyne Hilbrenner, \$5,000	Emily Worman, \$1,000

## JOHN S. BARRETT MEMORIAL SCHOLARSHIP

Eligible applicants must be graduating seniors from Lathrop High School pursuing an undergraduate degree at any regionally accredited four-year college, university, or two-year college.

Mason McFarland, \$1,000

## BLUE SPRINGS ROTARY CLUB SCHOLARSHIP

Eligible applicants must be graduating high school seniors from Blue Springs High School, Blue Springs South High School, Valley View High School, or Grain Valley High School, demonstrating a commitment to community service and pursuing undergraduate degrees or technical certifications.

Alexis Arreguin, \$2,000	Daniel Cheluget, \$2,000
Carly Butler, \$2,000	Sawyer Jackson, \$2,000

## BLUE SPRINGS ROTARY CLUB PRESIDENT'S SCHOLARSHIP

Eligible applicants must be graduating high school seniors from Blue Springs High School, Blue Springs South High School, Valley View High School, or Grain Valley High School with a minimum 3.0 GPA, demonstrating a commitment to community service, and pursuing undergraduate degrees or technical certifications.

Jolee McMullin, \$2,000	Vincent Vo \$2,000
-------------------------	--------------------

## DANIEL L. BODAS TECHNICAL SCHOLARSHIP

Eligible applicants must be graduating seniors from Eveleth-Gilbert High School in Eveleth, Minnesota and be pursuing trade careers.

Cole Jensen, \$3,000	Zane Stanaway-Ziegler, \$3,000
----------------------	--------------------------------

## JOHN F. BOWSER RADIOLOGY SCHOLARSHIP

Eligible applicants must be pursuing an education in radiologic technology through Avila University and Centerpoint Medical Center.

Ciara Corteville, \$2,625	Brooke Day, \$2,625
Naheed Daroghe, \$2,625	Morgan Senevey, \$2,625

## STEVEN D. BROWN SCHOLARSHIP

Eligible applicants must be graduating seniors from the Olathe School District and former Santa Fe Trail Junior High School students pursuing undergraduate degrees.

Kinslee Moore, \$750

## GENE AND JOANNE CABLE SCHOLARSHIP

Eligible applicants must be graduating seniors from Truman, William Chrisman or Van Horn High School in Independence, Missouri or a graduating senior having completed a program at Lex La-Ray Technical Center, with a demonstrated record of participation in school extracurricular activities, work, and community service.

Katherine Ameku, \$2,500	Nichole Goff, \$2,500
Joseph Casebolt, \$2,500	Tanner Jolley, 2,500
Joshua Dixon, \$2,500	Alexa Ortiz, \$2,500
Morgan Finley, \$2,500	

### **CENTERPOINT MEDICAL CENTER AUXILIARY SCHOLARSHIP**

Eligible applicants must be students in the metropolitan Kansas City area pursuing undergraduate degrees in health care fields.

Madison Brown, \$2,000      Alexa Ortiz, \$2,000  
Jolee McMullin, \$2,000      Christina Shelton, \$2,000

### **CENTERPOINT MEDICAL CENTER MEDICAL STAFF SCHOLARSHIP**

Eligible applicants must be employees or dependents of employees of Centerpoint Medical Center pursuing healthcare-related undergraduate degrees.

Briana Frerking, \$1,000      Hunter Gillen, \$1,000

### **COUNCIL OF CLUBS OF GREATER KANSAS CITY SCHOLARSHIP**

Eligible applicants must be students pursuing any field of study at any technical school, college, or university located within a 50-mile radius of 10th and Main Streets in Kansas City, Missouri.

Madison Brown, \$500      Kelsey Newland, \$500  
Mikayla Dixon, \$500      Beth Presler, \$500  
Trina Durham, \$500      Rachel Rellihan, \$500  
Lauren Eason, \$500      Dawson Schmutzler, \$500  
Joshua Isaacson, \$500

### **DAVID A CROMWELL MEMORIAL SCHOLARSHIP**

Eligible applicants must be graduating seniors from Blue Springs or Blue Springs South High Schools and attending a four-year public university in Missouri.

Seth Kaithoff, \$3,000

### **NORMAN AND MARY ANNE DAVIDSON SCHOLARSHIP**

Eligible applicants must be residents of Independence, MO.

Katherine Ameku, \$8,000      Beth Presler, \$8,000  
Anna Bedsworth, \$8,000      Tatiana Stickle, \$8,000  
Laura Knowles, \$8,000      Rebecca Stutzman, \$8,000  
Kelsey Newland, \$8,000      Annaleise Vochatzer, \$8,000  
Precious Plaisime, \$8,000

### **FORT OSAGE RESOURCES CHAMPION EDUCATION (FORCE.) SCHOLARSHIPS**

THCF manages all Fort Osage High School Scholarships. Eligible applicants must be graduating seniors of FOHS.

#### **A. Joan Lovelace**

Olivia Siefker, \$500

#### **Arthur Butler**

Trinity Thompkins, \$700

#### **Ben Whited**

Jordyn Dalton, \$500

#### **Carol Marcks Elementary**

Sarah Rellihan, \$500

#### **Connie Truelove Scholarship**

Alanis Cameron, \$500

#### **Dr. Gale T. Bartow Scholarship**

Trent Hogland, \$450

#### **Dr. Larry Ewing Aspiring Educator**

Trinity Thompkins, \$300

#### **Dr. Mark Enderle Scholarship**

Tyler Brison, \$500

#### **Dr. Paul James Scholarship**

Kylee Gorbet, \$500

#### **Dustin Payne Memorial**

David Jacquez, \$300

#### **Fort Osage Education Foundation Scholarship (FORCE)**

Alana Edgar, \$1,000      Tayler Hines, \$1,000  
Mallory Harp, \$1,000      Aniyah Parker-Allen, \$1,000

#### **Fort Osage Employee**

Annabella Ford, \$600

#### **FO Chapter DAR Scholarship**

Hailie Ferguson, \$150      John Yocum, \$150

#### **Gragg Family Memorial**

Mackenzie Barnett, \$150      Sadie Waller, \$150  
Olivia Siefker, \$150

#### **Gus Spencer Scholarship**

Kayla Turner, \$500

#### **Harley & Doris Reed Scholarship**

Breyana Cox, \$400

#### **Jimmy Golden Scholarship**

Savannah Short, \$200

#### **John Waldman Scholarship**

Myia Denham, \$500

#### **Judy McDaniel Yazel Memorial**

Jordyn Dalton, \$200

#### **Leadership**

Kylee Gorbet, \$400

#### **Leo A. & Linda Gussman Scholarship**

Amelika Acevedo, \$1,000

#### **Louann Dickmeyer Memorial**

Sadie Waller, \$200

#### **Melanie Meyer Memorial**

Kylee Gorbet, \$2,000

#### **Mona Richardson**

Heather Chiesi, \$250

#### **Robert Keeton Memorial**

Ryan York, \$250

#### **Victor Gragg**

Sadie Waller, \$800

#### **Vilas "Lee" Compton**

Mason Moore, \$400

### **HENRI E. GOETTEL YOUTH IN PHILANTHROPY AWARD**

Eligible applicants must be senior Youth Advisory Council members.

Autumn Handley, \$500

# Scholarships

## GRAIN VALLEY SCHOOL DISTRICT EDUCATION FOUNDATION

THCF manages all GVSD Scholarships. Eligible applicants must be graduating seniors from Grain Valley High School.

### TOP 15% OF THE GRADUATING CLASS

Mikaila Arnold, \$400	Gage Levell, \$400
Alexis Arreguin, \$400	Ashlee Limbach, \$400
Ethan Barnett, \$400	Sydney Lindley, \$400
Addison Baumgartner, \$400	John Martin, \$400
Alexander Brooks, \$400	Cora Mayernik, \$400
Isaac Burd, \$400	Jacob Mickelson, \$400
Jacob Collins, \$400	Aneysha Molina, \$400
Jada Cooper, \$400	Jacob Moriarty, \$400
Morgan Darling, \$400	Raymond Myers, \$400
Riley Fangman, \$400	Abigail Neer, \$400
Lillian Ford, \$400	Lauren Parker, \$400
Jaedha Godwin, \$400	Jenna Peoples, \$400
Chelsea Gorden, \$400	Chloe Peterson, \$400
Carolyn Hansen, \$400	Jason Pittman, \$400
Claire Hawkins, \$400	Mia Powell, \$400
Philip Helpfrey, \$400	Kaylan Richardson, \$400
Jillian Hight, \$400	Hayden Rowland, \$400
Dakota Hunter, \$400	Micah Siems, \$400
Chloe Ireland-Killday, \$400	BriLeigh Sims, \$400
Zachary Jenkins, \$400	Jackson Temples, \$400
Bailey Jinkens, \$400	Abigail Testa, \$400
Samantha Johnson, \$400	Gabriella Valverde, \$400
Elizabeth Kamstra, \$400	Jackson Williams, \$400
Ruthie Keats, \$400	Molly Wright, \$400

### ATHLETIC LETTER-OF-INTENT SCHOLARSHIP

Avery Huffman, \$500      Kellie Overturf, \$500

### JOHN CIANCIOLO MEMORIAL SCHOLARSHIP

Nick Hooper, \$1,000      Avery Huffman, \$1,000

### JAN REDING COMMUNITY SERVICE AWARD SCHOLARSHIP

Jada Cooper, \$500	Bailey Jinkens, \$500
Claire Hawkins, \$500	Jack Martin, \$500
Zachary Jenkins, \$500	Cora Mayernik, \$500

### JARED AND KERI ENGLISH FAMILY SCHOLARSHIP

Claire Hawkins, \$500      Ben DeMonbrun, \$500

### JEAN GILLIG SCHOLARSHIP

Cora Mayernik, \$250      Ben DeMonbrun, \$250

### DAVID AND PATTY HACKETT SCHOLARSHIP

Claire Hawkins, \$1,000

### MARY & LON HARPER SPEECH AND DEBATE SCHOLARSHIP

Mia Powell, \$1,000

### RACHEL HOUSE HUDSON MEMORIAL SCHOLARSHIP

Claire Hawkins, \$1,000	Cora Mayernik, \$1,000
Jillian Hight, \$1,000	Gabriella Valverde, \$1,000
Zachary Jenkins, \$1,000	

### KISSICK CONSTRUCTION SCHOLARSHIP

Gage Levell, \$1,000      Mia Powell, \$1,000  
Jacob Mickelson, \$1,000

### ED MCRELL MEMORIAL SCHOLARSHIP

Ava Moore, \$500

### MILITARY AWARDS FROM THE US MARINE CORPS: DISTINGUISHED ATHLETE AWARD

Cylas Brewer, \$250      Avery Huffman, \$250

### MILITARY AWARDS FROM THE US MARINE CORPS: SCHOLASTIC EXCELLENCE AWARD

Abigail Neer, \$250

### MILITARY AWARDS FROM THE US MARINE CORPS: SEMPER FIDELIS AWARD FOR MUSICAL EXCELLENCE

Jackson Temples, \$250

### MSHSAA SPORTSMANSHIP AWARD SCHOLARSHIP

Chelsea Gorden, \$500      Brycen Crandall, \$500

### DR. ROY MOSS MEMORIAL EDUCATION SCHOLARSHIP

Hayden Rowland, \$1,250

### BARBARA AND MOODY MURRY MUSIC SCHOLARSHIP

Jack Temples, \$500

### NAPIER AWARD FOOTBALL SCHOLARSHIP

Gage Forkner, \$1,000

### PAPA MURPHY'S OF GRAIN VALLEY SCHOLARSHIP

Ben DeMonbrun, \$500

### "SEED MONEY" SCHOLARSHIP

Riley Fangman, \$500      Kira Potter, \$500  
Jacob Mickelson, \$500

### DEAN SIBERT MEMORIAL SCHOLARSHIP

Alexis Arreguin, \$500

### SNI VALLEY ACADEMY SCHOLARSHIP

Jordin Epperson, \$1,000

## GREATER KANSAS CITY ASSOCIATION OF FAMILY CONSUMER SCIENCE SCHOLARSHIP

Eligible applicants must be residents of Kansas or Missouri who are in their junior or senior years pursuing undergraduate degrees in Family and Consumer Sciences or its knowledge-based areas.

Payton Drake, \$1,000      Tyra Franklin, \$1,000

## HEART OF A TIGER SCHOLARSHIP

Eligible applicants must be graduating senior baseball players from Lee's Summit High School.  
Luke Ruhl, \$500

## LESTER AND MARY HOMFELD ENDOWED SCHOLARSHIP

Eligible applicants must be graduating seniors from Lexington High School in Lexington, MO, or Lafayette County C-1 High School in Higginsville, MO.

Zachary Dickmeier, \$1,000	Tra Moss, \$1,000
Kyzer Gann-Vega, \$1,000	Caleb Neer, \$1,000
Nichole Goff, \$1,000	Mason Rumsey, \$1,000
Charles Grumke, \$1,000	Naomi Saucedo-Gonzalez, \$1,000
Kaylee Harden, \$1,000	Kaitlyn Thorp, \$1,000



### **RACHEL HOUSE HUDSON MEMORIAL SCHOLARSHIP**

Eligible applicants must be graduating seniors from Eastern Jackson County high schools with demonstrated strong faith and moral character.

Connor Bichsel, \$1,000      Samuel Stickney, \$1,000  
Zoey Coleman, \$1,000      Elana Stoeher, \$1,000  
Sawyer Jackson, \$1,000

### **NORM AND LINDA HUMPHREY SCHOLARSHIP**

Eligible applicants must be graduating seniors from the Independence School District with participation in non-athletic competitive activities, broad academic interests, community service activities, and financial need.  
Rebecca Stutzman, \$1,000

### **DAVID HURT MEMORIAL SCHOLARSHIP**

Eligible applicants must be graduating seniors from the Hannibal or Lee's Summit MO school districts with demonstrated leadership abilities, good character, and financial need.

Wyatt Carlson, \$1,500      Alivia Tolbert, \$1,500

### **KANSAS CITY HOSPICE & PALLIATIVE CARE PAMELA PUPPE PATIENT CARE SCHOLARSHIP**

Eligible applicants must be Kansas City Hospice and Palliative Care employees pursuing education to enhance skills related to current or future patient care positions.

Karla Kagay, \$1,000      An Lane, \$1,000

### **HARRY AND CONNIE KATOWITZ MEMORIAL SCHOLARSHIP**

Eligible applicants must be graduating seniors from Truman, Van Horn, or William Chrisman High Schools pursuing undergraduate degrees in business or economics.  
Joshua Dixon, \$1,000

### **GREGORY KNAPP TRAIN YOUR BRAIN SCHOLARSHIP**

Eligible applicants must be graduating high school seniors from any public or private high school in Blue Springs, Grain Valley, Independence, Lee's Summit, or Raytown.

Lily Aldenderfer, \$1,000      Matthew Gerber, \$1,000  
Connor Bichsel, \$1,000      Katelyn Ravasini, \$1,000  
Daniel Cheluget, \$1,000

### **LAFAYETTE COUNTY C-1 EDUCATIONAL FOUNDATION**

THCF manages all Lafayette County Educational Foundation Scholarships. Eligible applicants must be graduating seniors from Lafayette County High School.

#### **ALBERT & BLANCHE LEE MEMORIAL SCHOLARSHIP**

Naomi Saucedo-Gonzalez, \$500

#### **ALICE & RICHARD CARTER MEMORIAL SCHOLARSHIP**

Kyzer Gann-Vega, \$500      Tatyanna Wood, \$500  
Braydan Sonstegard, \$500

#### **CLASS OF 1977 MEMORIAL SCHOLARSHIP**

Kyzer Gann-Vega, \$500

#### **CLASS OF 1978 MEMORIAL SCHOLARSHIP**

Micah Gregg, \$500

#### **DEREK W. GILLILAN MEMORIAL SCHOLARSHIP**

Madelyn McBride, \$1,000      Naomi Saucedo-Gonzalez, \$1,000

### **ED & HARRI HUSCHER FAMILY SCHOLARSHIP**

Mason Rumsey, \$3,000

### **ENGINEERING & TECHNICAL SCIENCES SCHOLARSHIP**

Charles Grumke, \$1,000      Nathan Schewe, \$1,000  
Garrett McEntire, \$1,000

### **FORREST RIEKHOF MEMORIAL SCHOLARSHIP**

Madeline Otero, \$400

### **GARRETT MOORE MEMORIAL SCHOLARSHIP**

Briana Frerking, \$1,000      Braydan Sonstegard, \$1,500

### **HERMAN & MICKY SIMMONS MEMORIAL SCHOLARSHIP**

Katherine Gibson, \$500

### **JAMES STONER MEMORIAL SCHOLARSHIP**

Zachary Dickmeier, \$750

### **MARLA TOBIN SCHOLARSHIP**

Reagan Craig, \$1,000      Mason Rumsey, \$1,000  
Briana Frerking, \$1,000

### **PAULA M. PERRINE MEMORIAL SCHOLARSHIP**

Macie Lee, \$500      Mason Rumsey, \$500

### **PURNELL-SCOTT SCHOLARSHIP**

Charles Grumke, \$1,500

### **RALPH THIEMAN/EARL & MAXINE SMARR SCHOLARSHIP**

Mason Craig, \$730      Charles Grumke, \$730  
Reagan Craig, \$730      Macie Lee, \$730  
Zachary Dickmeier, \$730      Mason Rumsey, \$730  
Briana Frerking, \$730      Naomi Saucedo-Gonzalez, \$730  
Kyzer Gann-Vega, \$730      Braydan Sonstegard, \$730  
Katherine Gibson, \$730      Donavinn Wood, \$730

### **RENNO MEMORIAL SCHOLARSHIP**

Katherine Gibson, \$500

### **RICHARD CARTER MEMORIAL SCHOLARSHIP**

Hailey Kalthoff-Arbogast, \$750  
Naomi Saucedo-Gonzalez, \$750

### **SAM DUNCAN MEMORIAL SCHOLARSHIP**

Macie Lee, \$500

### **BLAIR MICHAELA SHANAHAN LANE MEMORIAL SCHOLARSHIP**

Eligible applicants must be graduating seniors from any public high school in Independence, Lee's Summit, Raytown, or St. Michael the Archangel High School, St. Teresa's Academy, or Notre Dame de Sion High School who have demonstrated perseverance through distressing life circumstances.

Kayce Cooper, \$1,000      Austin Yarbrough, \$1,000  
Katelyn Laughlin, \$1,000

### **THOMAS C. LOCKE SCHOLARSHIP SPONSORED BY EASTERN JACKSON COUNTY BAR ASSOCIATION**

Eligible applicants must be graduating seniors from any Eastern Jackson County high school pursuing undergraduate degrees and who have career and personal goals relating to the attributes of Tom Locke.

Sadie Waller, \$1,000

# Scholarships

---

## LUTZ FAMILY SCHOLARSHIP

Eligible applicants must be graduating seniors from Butler High School in Butler, MO, pursuing certificates or undergraduate degrees at any accredited technical or vocational school, junior college, college, or university.

Blaire Miller, \$5,000      Claire Sutton, \$5,000

Aubrie Oates, \$5,000

## FORREST AND MARJORIE MARTIN SCHOLARSHIP

Eligible applicants must be residents of Eastern Jackson County pursuing technical, undergraduate, or graduate degrees.

Katherine Arnold, \$4,000	Samantha Petralie, \$4,000
Lauren Eason, \$4,000	Beth Presler, \$4,000
Alex Green, \$4,000	Dawson Schmutzler, \$4,000
Kelsey Newland, \$4,000	Hannah Scott, \$4,000
Kennedy Noland, \$4,000	Tatiana Stickle, \$4,000

## ELIZABETH HILL MCCLURE SCHOLARSHIP

Eligible applicants must be senior Youth Advisory Council members.

Chloe Petersen, \$1,500

## MCMILLIN FAMILY FOUNDATION SCHOLARSHIP

Eligible applicants must be graduating seniors from Fort Osage School District in the top 25 percent of their class.

Alanis Cameron, \$1,000	Aleesa Hill, \$1,000
Evan Funk, \$1,000	Sadie Waller, \$1,000
Megan Hall, \$1,000	Ishbel Wilson, \$1,000

## JAY MCNAMARA MEMORIAL SCHOLARSHIP

The Jay McNamara Memorial Scholarship Fund was established in 2020 by the McNamara family to provide scholarships to students attending St. Michael the Archangel Catholic High School in Lee's Summit, MO, to honor Jay's legacy of love.

Leah Lopez, \$1,000

## MEDICAL ALLIANCE OF THE METROPOLITAN MEDICAL SOCIETY OF GREATER KANSAS CITY SCHOLARSHIP

Eligible applicants must be college students pursuing careers in nursing or other allied health careers and must have completed all classes to be sophomores or above.

Stephanie Lewis, \$1,000	Kaylee Schaeffer, \$1,000
Alexa Ortiz, \$1,000	Christina Shelton, \$1,000

## EDWARD L. AND HELEN L. NEWLIN SCHOLARSHIP

Eligible applicants must be graduating seniors from Fort Osage, Grain Valley, Oak Grove, or Raytown School Districts pursuing undergraduate degrees at any four-year college or university.

Samantha Downs, \$1,500	Kloee Mills, \$1,500
Evan Funk, \$1,500	Brooklyne Sederwall, \$1,500
Bryleigh Giffin, \$1,500	Sadie Waller, \$1,500

## OAK GROVE SCHOOL DISTRICT EDUCATION FOUNDATION

THCF manages several Oak Grove School District Education Foundation Scholarships. Eligible applicants must be graduating seniors of OGHS.

### L. CLAY BARTON MEMORIAL SCHOLARSHIP

Bryleigh Giffin, \$1,000

### OAK GROVE CHAMBER OF COMMERCE SCHOLARSHIP

Makenna Henderson, \$3,000    Shayton Wright, \$3,000  
Macey Squires, \$3,000

### HERSHEL & MAE CLINE SCHOLARSHIP

Madelyn Williams, \$500

### FREDDIE DOHERTY MEMORIAL SCHOLARSHIP

Emily Moyer, \$1,000

### DAYTON HOUSE MEMORIAL SCHOLARSHIP

Emily Moyer, \$500

### KRYSTLE ROSE LOGSTON SCHOLARSHIP

Macey Squires, \$500

### HEATHER KAY MCCLAIN MEMORIAL SCHOLARSHIP

McKenna Gray, \$500

### OAK GROVE EDUCATION FOUNDATION SCHOLARSHIP

Austin Penny, \$1,000      Kaylee Holt, \$1,000  
Hannah Ighoyivwi, \$1,000    Dakota Ray, \$1,000

### OAK GROVE JIMMY "CECIL" WALL MEMORIAL SCHOLARSHIP

Claire Dowell, \$1,000

### DUNCAN OSBURN SCHOLARSHIP

Kennedy Reisdorph, \$1,000

### CHARLES & ALMA PALLETTE MEMORIAL SCHOLARSHIP

Macey Squires, \$1,000

### OAK GROVE PAPA MURPHY'S SCHOLARSHIP

Ella "Grace" Sears, \$500

### COACH PIRCH MEMORIAL SCHOLARSIP

Bryleigh Giffin, \$500

### JEREMIAH PULLEY MEMOIRAL SCHOLARSHIP

Anna Gustin, \$500

### CHARLENE ROSCHER MEMORIAL SCHOLARSHIP

Gracy Wilson, \$1,000

### KENNETH & LOIS ROYER SCHOLARSHIP

Makayla Borland, \$2,000    McKenna Gray, \$2,000

### TRIPP FAMILY SCHOLARSHIP

Jaycee Alexander, \$1,000

### CLYDE E. WILLIAMS SCHOLARSHIP

Canyon Swafford, \$1,000

### DAVID A. AND BARBARA J. YARGER MEMORIAL SCHOLARSHIP

Bryleigh Giffin, \$500



### **WENDELL J. AND MYRNA J. OLSON STUDENT ASSISTANCE SCHOLARSHIP**

Eligible applicants must be active members in good standing of St. Paul's Lutheran Church in Concordia, Missouri, who are graduating high school seniors, part-time students, or full-time students in good standing at State Fair Community College, University of Central Missouri, or any Lutheran Church-Missouri Synod-affiliated post-secondary institution.  
Hali Deatherage, \$1,000      Peyton Moore, \$1,000  
Jonathan Grass, \$1,000      Brittany Tolias, \$1,000

### **GEORGE AND ELLEN JANE PETRIE SCHOLARSHIP**

Eligible applicants must be pursuing undergraduate degrees in elementary or secondary education at UCM, UMKC, or Truman State.  
Kennedy Noland, \$1,000

### **EUGENE J. ROLFE MEMORIAL ENGINEERING SCHOLARSHIP**

Eligible applicants must be graduating seniors from the Lee's Summit School District, St. Michael the Archangel Catholic High School, or home school graduates residing in Lee's Summit or the Lee's Summit School District boundaries pursuing undergraduate degrees in engineering and have demonstrated participation in music.  
Lily Aldenderfer, \$1,500      Kara Moulder, \$1,500

### **ROTARY CLUB OF EASTERN INDEPENDENCE SCHOLARSHIP**

Eligible applicants must be graduating seniors from the Fort Osage and Independence School Districts.  
Heather Chiesi, \$1,000      Rebecca Stutzman, \$1,000  
Tristyn Perryman, \$1,000

### **SCHMIDT SCHOLARSHIP**

Eligible applicants must be graduating seniors from Ray County, MO, who are active members of the Baptist churches and pursuing undergraduate degrees at accredited colleges or universities.  
Joshua Isaacson, \$5,000      Chandler Wheeler, \$5,000  
Timothy Isaacson, \$5,000

### **LAURA G. STARK MEMORIAL SCHOLARSHIP**

Eligible applicants must be graduating seniors from Lee's Summit or Lee's Summit West high schools pursuing degrees in healthcare-related fields at any accredited junior college, college, or university.  
Gavin Mitchell, \$500      Rylee Wieboldt, \$500  
Lauren Tibbetts, \$500

### **THERESE STEGNER (PIPER) MEMORIAL SCHOLARSHIP**

Eligible applicants must be graduating seniors from Belton High School pursuing undergraduate degrees in social work or any medical field.  
Bethannie Caparoon, \$1,500

### **BILL SUMMA SCHOLARSHIP**

Eligible applicants must be student-athletes at William Chrisman High School, maintaining a 3.0 GPA and pursuing undergraduate education.  
Joseph Casebolt, \$500

### **TONI THORNTON AAUW RE-ENTRY SCHOLARSHIP**

Eligible applicants must be women returning to complete their undergraduate degrees after being out of school for at least five years. Applicants must have been full-time or part-time students within the last six months and must have completed a minimum of 30 credit hours, 15 of which must have been completed since re-entry.  
Kristen Adams, \$1,000      Allison Dunlop-Saunders, \$1,000

### **BESS WALLACE TRUMAN SCHOLARSHIP SPONSORED BY INDEPENDENCE JUNIOR SERVICE LEAGUE**

Eligible applicants must be graduating senior female residents of Independence, MO, who closely mirror the life and values of Bess Wallace Truman.  
Hadley Brillhart, \$1,000      Megan Hall, \$1,000

### **HARRY S. TRUMAN MEMORIAL SCHOLARSHIP**

Eligible applicants must be full-time, certified teachers at a primary or secondary public school in Independence. The scholarship provides classroom materials, field trips, or instructional programs to enhance the educational experience.  
Jonah Bates, \$600      Kristen Stahl, \$427.13

### **VENABLE SCHOLARSHIP**

Eligible applicants must be graduating seniors from the KC area, active members of evangelical Christian churches, and pursuing undergraduate degrees in business or engineering at an accredited Christian college or university in the U.S. or state college or university in Missouri or Kansas.  
Blake Doss, \$7,000      Drew Moore, \$7,000

### **WALTERS-MAGEE SCHOLARSHIP**

Eligible applicants must be graduating seniors from the Kansas City metro area who are active members of Christian churches pursuing undergraduate degrees in education or psychology.  
Rachel Ada, \$5,000      Haley Mesz, \$5,000  
Sydney Bartlett, \$5,000      Hannah Mundt, \$5,000  
Christjin Bell, \$5,000      Emma O'Connor, \$5,000  
Hadley Brillhart, \$5,000      Elizabeth Oltmanns, \$5,000  
Tyeisha Brock, \$5,000      Alisen Pierson, \$5,000  
Claire Chase, \$5,000      Emma Stuck, \$5,000  
Konner Gilson, \$5,000

### **WATKINS FAMILY HARBINGER SCHOLARSHIP**

Eligible applicants must be first-generation college students graduating from Raytown or Raytown South High School.  
Rianna Ellis, \$1,200      Anita Inhenacho, \$1,200  
Brissa Gonzalez, \$1,200

### **WILLIAM CHRISMAN CLASS OF 1953 SCHOLARSHIP**

Eligible applicants must be graduating seniors from William Chrisman High School and in the top 25 percent of their class.  
Joseph Casebolt, \$1,000      Rebecca Stutzman, \$1,000

### **PHILLIP ZAROOR ENTREPRENEURIAL SCHOLARSHIP**

Eligible applicants must be graduating seniors from Harrisonville High School pursuing undergraduate degrees to pursue entrepreneurial careers.  
Trevor Campbell, \$500      Ethan Kohl, \$1,000  
Emma Fischer, \$750

# Remaining Scholarships

Decisions on the scholarships listed below have yet to be made for this year.

## **CORPORAL BENJAMIN ASHLEY MEMORIAL SCHOLARSHIP**

Eligible applicants must be graduating seniors from Truman High School who participate in music-related activities and community service and are pursuing undergraduate degrees at any accredited university, college, or junior college.

## **PAT BARNHARD MEMORIAL SCHOLARSHIP**

Eligible applicants must be graduating seniors from William Chrisman High School who plan to study history, political science, or business at an accredited college, university, or junior college.

## **JOSH BORGMAYER MEMORIAL SCHOLARSHIP**

Eligible applicants must be graduating seniors from Blue Springs High School and active Drama Club members for at least one year.

## **RON BRUCH NURSING SCHOLARSHIP**

Eligible applicants must be college students accepted in the baccalaureate nursing program at Graceland University who have completed sophomore-level courses.

## **OPAL BARKER DAY AND PHYLLIS DAY COMBEST MEMORIAL EDUCATION FUND**

Eligible applicants must be residents of Eastern Jackson County or graduates of Eastern Jackson County or Lafayette County high schools pursuing undergraduate degrees in Elementary Education at the University of Central Missouri.

## **SENATOR RONNIE DEPASCO SCHOLARSHIP**

Eligible applicants must be graduating seniors from a public high school in KCMO or a dependent of a KC Police or KC Fire Department employee and pursuing undergraduate study at any Missouri accredited university, junior college, or technical school.

## **GLEENDA K. DOWLER MEMORIAL SCHOLARSHIP**

Eligible applicants must be graduating seniors of Lee's Summit North High School who have a demonstrated record of participation in school activities such as sports and out-of-school activities such as work and community service.

## **DREXEL PUBLIC SCHOOL DISTRICT FOUNDATION**

THCF manages all Drexel Scholarships. Eligible applicants must be graduating seniors of Drexel High School.

## **KAY AND MORRIS DUNNING NURSING SCHOLARSHIP**

Eligible applicants must be college students accepted in baccalaureate nursing programs at UCM, Graceland University, Park University, MCC Penn Valley, Rockhurst University, or Research College of Nursing and must have completed sophomore-level courses.

## **SARAH GARRETT MEMORIAL SCHOLARSHIP**

Eligible applicants must be graduating senior female varsity basketball players from Blue Springs High School who have demonstrated academic excellence.

## **BRANDON GIESELMAN 4-H/FFA SCHOLARSHIP**

Eligible applicants must be a graduating senior or college student, a Lafayette County 4-H Club, or an FFA Chapter member. Applicants must demonstrate financial need, academic excellence, and leadership through FFA Chapter or 4-H Clubs involvement.

## **HATRIDGE CAREER SUPPORT SCHOLARSHIP**

Eligible applicants must pursue technical certifications or training at any accredited technical school, junior college, or college.

## **INDEPENDENCE YOUNG MATRONS SCHOLARSHIP**

Eligible applicants must be full-time students attending any Eastern Jackson County Metropolitan Community College.

## **CHUCK AND JENEEN JONES SCHOLARSHIP**

Eligible applicants must be members of First Baptist Church in Harrisonville, MO.

## **EMILY KIRK MEMORIAL SCHOLARSHIP**

Eligible applicants must be graduating seniors from Blue Valley West High School in Overland Park, Kansas, pursuing an undergraduate degree in nursing or any medical field and having demonstrated financial need.

## **WILLIAM G. LUECKENHOFF MEMORIAL SCHOLARSHIP**

The Lueckenhoff family established the William G. Lueckenhoff Memorial Scholarship in honor of William Lueckenhoff. Will was known for his generosity and determination to help others in need. This scholarship supports students attending St. Michael the Archangel High School in Lee's Summit.

## **JULIE ELIZABETH MARSHALL MEMORIAL SCHOLARSHIP**

Eligible applicants must be students enrolled at the Nativity of Mary School in Independence.

## **STELLA MORAN MEMORIAL SCHOLARSHIP**

Eligible applicants must be undergraduate students at Baker University or Central Methodist University. Students must have a minimum of 60 credit hours and must be pursuing undergraduate degrees in primary or secondary education.

## **GEORGIA B. NORTHWAY MEMORIAL SCHOLARSHIP SPONSORED BY MIDWEST HEMOPHILIA ASSOCIATION**

Eligible applicants must be either high school seniors or college students who have been diagnosed with or have a family member diagnosed with a bleeding disorder.

## **SAM AND LINDSEY PORTER SCHOLARSHIP**

Eligible applicants must be graduating high school seniors from Truman, Van Horn, or William Chrisman High Schools in Independence pursuing undergraduate degrees from an accredited university, college, or junior college.

## **ROLFE BRIDGE SCHOLARSHIP**

This scholarship is designed to provide motivation for Kathy Rolfe's bridge students to continue to play and learn more about this game which will provide lifelong opportunities for enjoyment, learning, and social contacts.

## **SEGER FAMILY NURSING SCHOLARSHIP**

Eligible applicants must be college students accepted in the baccalaureate nursing program at Graceland University who have completed sophomore-level courses.

## **VERN AND RUTHEL SINCLAIR MEMORIAL SCHOLARSHIP**

Eligible applicants must be graduating seniors from the Independence School District or Center Place Restoration School who are pursuing undergraduate degrees in vocal or instrumental music with demonstrated involvement in music and community service activities.

## **SIXTH BOMB GROUP MEMORIAL SCHOLARSHIP**

Eligible applicants must be descendants of the Sixth Bomb Group Regiment members pursuing their undergraduate degrees at accredited colleges or universities.

## **MARK STANKE MEMORIAL SCHOLARSHIP**

Eligible applicants must be graduating seniors from Truman High School or Lee's Summit West High School who maintain a minimum GPA of 3.0 and are pursuing bachelor's degrees in art, science, or business.

## **JASON STONE CREATIVITY SCHOLARSHIP**

Eligible applicants must be graduating seniors from any public high school in Blue Springs, Fort Osage, Independence, or Lee's Summit pursuing undergraduate degrees in visual art.

## **SUGAR CREEK BUSINESS AND CIVIC CLUB SCHOLARSHIP**

Eligible applicants must have been residents of Sugar Creek for at least two years and be pursuing bachelor's degrees.

## **CITY OF SUGAR CREEK NORMAN AND MARY ANNE**

## **DAVIDSON SCHOLARSHIP**

Eligible applicants must be graduating seniors currently residing in Sugar Creek, MO, for at least one year.

## **TILE CONTRACTORS' ASSOCIATION OF AMERICA, INC.**

## **FAMILY SCHOLARSHIP**

Eligible applicants must be qualified employees or family members of qualified employees of TCAA contractor companies.

## **TILE CONTRACTORS' ASSOCIATION OF AMERICA, INC. ARCHITECTURAL SCHOLARSHIP**

Eligible applicants must be pursuing professional degrees in architecture.

## **TIMOTHY LUTHERAN CHURCH WILLIAM P. GERIKE SCHOLARSHIP**

Eligible applicants must be pursuing careers in full-time Lutheran Church Missouri Synod church work as a pastor, teacher, director of Christian education, or school administrator.

## **TIMOTHY LUTHERAN CHURCH THEODORE V.**

## **SCHUBKEGEL SCHOLARSHIP**

Eligible applicants must be members of Timothy Lutheran Church in Blue Springs and enrolled in Timothy Lutheran School.

## **TIMOTHY LUTHERAN CHURCH BETTY WILSON SCHOLARSHIP**

Eligible applicants must be members of Timothy Lutheran Church in Blue Springs and enrolled in either Lutheran High School in Kansas City or St. Paul Lutheran High School in Concordia.

## **THE VITA M. TOTTA MEMORIAL SCHOLARSHIP FUND FOR NATIVITY OF MARY CATHOLIC SCHOOL**

Eligible applicants must be seventh-grade students at Nativity of Mary Catholic School.

## **ANDREW VIDAL MEMORIAL SCHOLARSHIP**

Eligible applicants must be pursuing an undergraduate degree at any junior college or college and have a Cumulative GPA of 3.25 or better. Preference may be given to pledges and initiated members of the Sigma Pi Fraternity at the Missouri University of Science and Technology.

## **ELIZABETH WEEKLEY SUTTON SCHOLARSHIP**

Eligible applicants must be graduating seniors from North Kansas City High School or Oak Park High School pursuing undergraduate degrees in family and consumer sciences and knowledge-based areas.

## 2022 BOARD OF DIRECTORS

---

**Karen Schuler, Chair**  
**Jeff Walters, Vice Chair**  
**Bret Kolman, Treasurer**  
**Lynette Wheeler, Secretary**  
**Steve Potter, Past Chair**  
**Ted Bowman**  
**Michele Crumbaugh**

**Linda Gerding**  
**Liesl Hays**  
**Cliff Jones**  
**David Mayta**  
**Thomas Meyer**  
**Melanie Moentmann**  
**Joe Mullins**

**Glen Nash**  
**Rosalie Newkirk**  
**Steve Noll**  
**Rochelle Parker**  
**Randy Rhoads**  
**Beth Rosemergy**  
**Merideth Rose**

**Stan Salva**  
**Beth Silverstein**  
**Jason Snodgrass**  
**Terri Steele**  
**Allan Thompson**  
**Montie Tripp**  
**Dyan Zimmerman**

## 2022 ADVISORY BOARDS

---

### BLUE SPRINGS/ GRAIN VALLEY

*Chair*  
**Glen Nash**  
*Vice Chair*  
**Eddie Saffell**  
*Secretary*  
**Cathy Allie**

**Jake Greco**  
**Travis Hunt**  
**Crystal Johnson**  
**Lorne Meinershagen**  
**Cindy Miller**  
**Kim Meyers**  
**Marty Napier**  
**Brandyce Parks**  
**Kim Roam**  
**Tom Rohr**  
**Jeff Smith**  
**Trisha Totta**  
**Cory Unrein**

### INDEPENDENCE/ SUGAR CREEK

*Chair*  
**Terri Steele**  
*Vice Chair*  
**Natalie Sevy**  
*Secretary*  
**Beth Savidge**

**Dwight Barnhard**  
**Don Claphan**  
**Ryan Crider**  
**Cindy Foster**  
**Lori Halsey**  
**Maike Larson**  
**Zachary Mallory**  
**Chuck Mikulich**  
**John Ruddy**  
**John Ryan**  
**Bridgette Shaffer**  
**Terry Snapp**  
**Ginger Williams**

### LEE'S SUMMIT/LAKE WINNEBAGO

*Chair*  
**Liesl Hays**  
*Vice Chair*  
**Trisha Drape**  
*Secretary*  
**Ritchie Momon**

**Rob Binney**  
**Casey Crawford**  
**Todd Haynes**  
**Joe Hughes**  
**Tom Jackson**  
**Claudia Meyer**  
**Lauren Moxley-Johnson**  
**Janice Phelan**  
**Amanda Robinson**  
**Michele Spilker**  
**Joel Wilson**  
**Joy Vann-Hamilton**

### RAYTOWN

*Chair*  
**Ted Bowman**  
*Vice Chair*  
**Dave Turner**  
*Secretary*  
**Melissa Reimann**

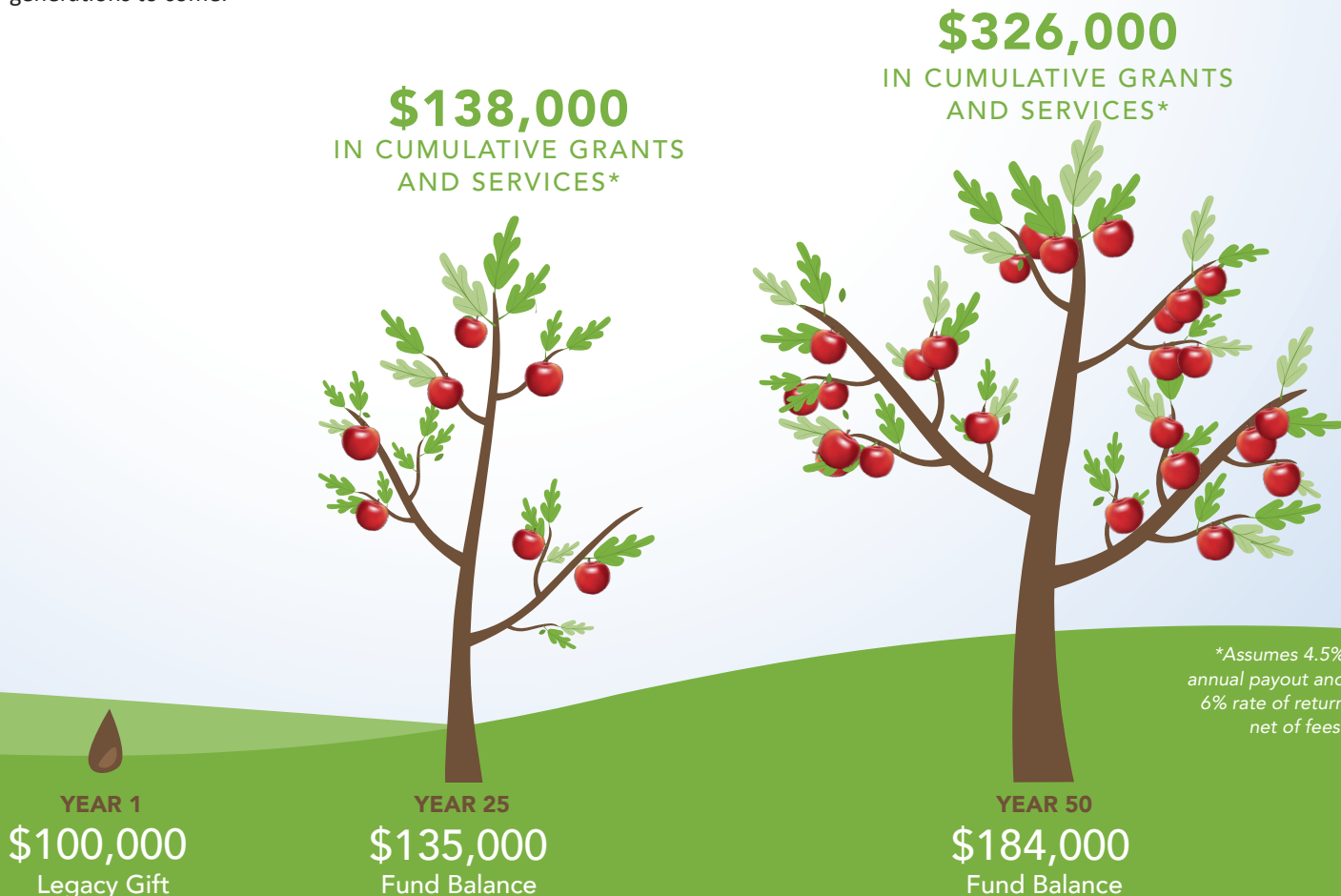
**Kaylie Baker**  
**Robert Cordell**  
**Brian DeMoss**  
**John Grant**  
**Loretha Hayden**  
**Damon Hodges**  
**Erin Luttrell**  
**Rene Purtee**  
**Linda Roberts**  
**Brian Ross**  
**DeAnn Stock**  
**Matt Verlinden**  
**Mike Watkins**



# Your Scholarship Fund

FROM A SINGLE SEED, A FOREST GROWS

A scholarship fund at Truman Heartland Community Foundation couples your dreams with the foundation's expertise in scholarship administration to provide the support students need to follow their dreams and work toward a brighter future. By investing in area students, you are elevating families' economic standing in our community and making an impact for generations to come.



To start your scholarship fund, make a gift to Truman Heartland Community Foundation. You can give cash, appreciated securities, real estate, use your IRA Required Minimum Distribution or other assets valued at \$25,000 or more.

- You sign a simple letter of direction, establishing an endowed scholarship fund bearing the name of your choice.
- Your gift is placed into an endowment that is invested over time. Earnings from your fund are used to award scholarships.
- You receive tax benefits in the year your gift is made.
- Our professional staff helps you determine the eligibility and selection criteria for your scholarship based on: the field of study, academic achievements, extracurricular activities, or financial need, for example.
- We handle the administrative details and award scholarships in the fund's name based on its value. You have two administration options:
  1. **Advisory Committee:** You choose members to serve on an Advisory Committee, along with one THCF representative, and review all eligible scholarship applications. Then the committee makes recommendations to the Truman Heartland Board to award scholarships to deserving students.
  2. **Foundation Selection:** Truman Heartland's Scholarship Committee reviews all eligible scholarship applications and makes the scholarship award selections.